

Confined Space Inventory for Saint Cloud Public Schools



Inspector: Rachel Koehler

Inspection Date: 11/17/2006

Building: *Madison Elementary*

Location: *Boiler Room*

Type of Space: *Tunnel*

Space Classification: *Non-Permit*

Potential Hazards:

No Hazards

Number of Entries into Space: *10*

Other Considerations:

Asbestos

City sewer or water

Electrical

Poor lighting

Steam pipes

Comments: *Tunnel travels throughout building, except the D wing.*



Photo Date: 11/17/2006

Photo Description

Tunnel access in Boiler Room.

Confined Space Inventory for Saint Cloud Public Schools



Inspector: Rachel Koehler

Inspection Date: 11/17/2006

Building: *Madison Elementary*

Location: *A Wing Basement*

Type of Space: *Sump*

Space Classification: *Permit*

Potential Hazards:

Potential for oxygen deficiency

Engulfment

Number of Entries into Space: *1*

Other Considerations:

Biological

City sewer or water

Slick/wet surfaces

Comments: *Lockout/Tagout procedures for pumps are required prior to entry.*

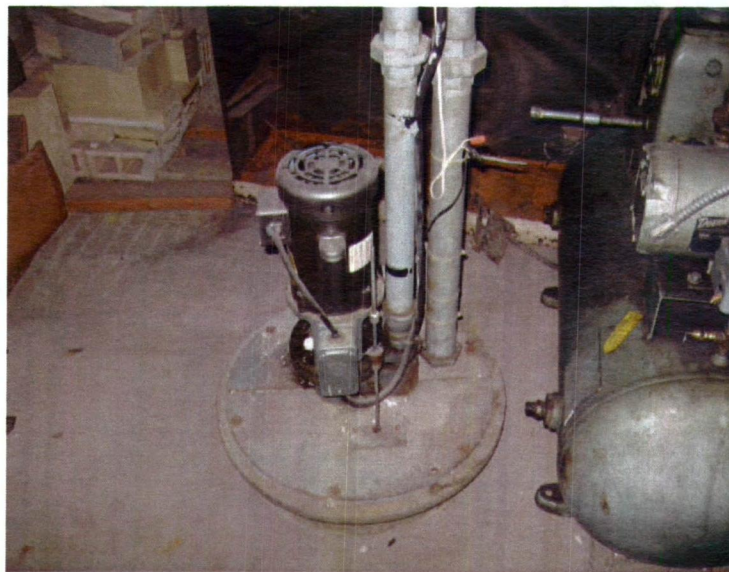


Photo Date: 11/17/2006

Photo Description

Sump

Confined Space Inventory for Saint Cloud Public Schools



Inspector: Rachel Koehler

Inspection Date: 11/17/2006

Building: *Madison Elementary*

Location: *Exterior Building Parking Lot*

Type of Space: *Storm sewer*

Space Classification: *Permit*

Potential Hazards:

Potential for oxygen deficiency

Engulfment

Configuration

Number of Entries into Space: *1*

Other Considerations:

City sewer or water

Fall hazards

Poor lighting

Slick/wet surfaces

Comments: *None*



Photo Date: 11/17/2006

Photo Description

Storm Sewer